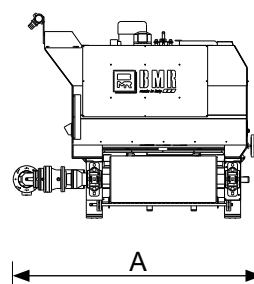
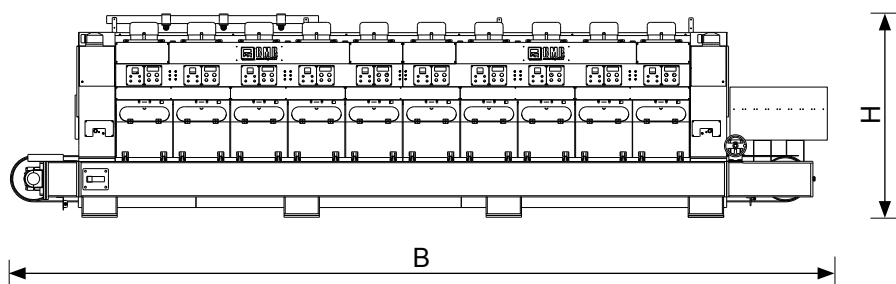


4 DIFFERENT CONFIGURATIONS in order to process the widest range of sizes:

1	SUPER SHINE 720 up to 600mm size
2	SUPER SHINE 1000 up to 1000mm size
3	SUPER SHINE 1200 up to 1200mm size
4	SUPER SHINE 1600 up to 1600mm size



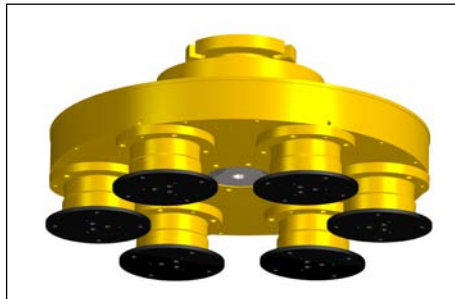
SUPERSHINE	Unit of measurement	720	1000	1200	1600
Number of heads	n.	10	10	10	10
Dimensions (AxBxH)	mm.	2400x9070x2200	2700x9070x2200	2900x9070x2200	3200x9070x2200
Machine weight	Kg	11500	15800	18200	22000
Total power installed	kW	165	165	165	165
Compressed air	l/min.	60	60	60	60
Water	l/min.	195	195	195	195
Thickness max	mm.	30	30	30	30
Size min./max.	mm.	300/700	300/1000	300/1200	300/1600

Process description:

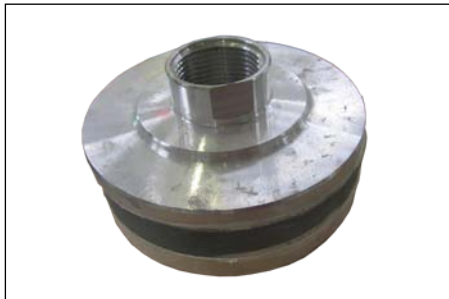
The **10 PLANETARY HEADS** Ø 580mm, 6 tools Ø 160mm, have the following functions:

- the first 7 **APPLY AND POLISH** the product
- the following 3 are used for **WASHING**
- The **AUTOMATIC ADJUSTMENT** of the head pressure and of the **DOSING** of METCLEAN 1006

The result is a guarantee of **CONTINUITY of QUALITY** for the finished product.



Planetary Head




Tool



Product Dosing Pump

METCLEAN 1006

The process of applying METCLEAN 1006 causes a chemical, mechanical and physical reaction which, under the right pressure and temperature conditions, **PENETRATES DEEP INTO THE PORES OF THE TILE** ensuring **SHINE, WEAR** and **ACID RESISTANCE**.



Revision 1
dated January 27, 2014

METCLEAN 1006
Surface treating agent

DESCRIPTION
 Metclean 1006 is a water based product containing a modified silica as active ingredient.
 Metclean 1006 is particularly suitable for filling the pores and imparting anti-acid properties to polished or lapped ceramic wares.
 Surfaces treated with Metclean 1006 show high gloss, improved resistance to stain and easy-to-clean properties.
 Metclean 1006 secures a semi-permanent finishing to treated surfaces.

APPLICATION
 Metclean 1006 should be used undiluted on perfectly clean and dry surfaces.
 The product is applied dropwise by the machine as lubricating agent in lapping phase.
 The amount of Metclean 1006 to be used for each application is about 80 gr/m².
 Shake well before use.

PERFORMANCE TEST
 The assessment of the resistance to stains should be carried out on perfectly dry treated surfaces, normally 24h after the application of the product.

TECHNICAL INFORMATION
 Appearance: Pale liquid
 Odour: light
 Solid residue: 15,0 – 25,0%
 pH: 1,4 – 2,4
 Density: 1,08 – 1,13g/cm³

STORAGE CONDITIONS
 Shelf life: 12 months in the sealed original containers
 Storage temp.: 5° - 45°C
 Store in the original containers in a dry, cool and well ventilated area. Keep away from direct sunlight or other sources of heat.
 The product forms gels when exposed to air. After opening, use the product within a short period.

SAFETY
 Metclean 1006 is intended for industrial use. The usual precautions used for chemical products should be respected. Good general and local ventilation of working areas is suggested. Local aspiration on the workplaces is recommended.
 Please, refer to the Safety Data Sheet for additional information

PACKAGING
 Kg 25 – Plastic cans
 Kg 500 – Plastic tanks
 Kg 1000 – Plastic tanks

METCO SRL
 via Galilei, 4 – 60029 Montevoglio (BO) – ITALY
 Ph. +39 (0) 51 83 03 93 - Fax +39 (0) 51 83 03 66
 VAT No. / 05178410201 - REA BO 441887 - Cof. SOC. € 1.450.000 i.v.
www.metcobella.com / info@metco.it



Shine above 90 Gloss



Wear resistant



Acid resistant



Acid resistant